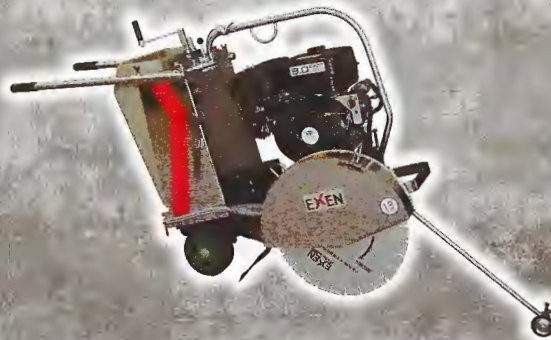


VIBRATION SPECIALIST

EXEN

EXEN GO
100TH
ANNIVERSARY

Superior Performance & Dynamic Power
EXEN VIBRATORS



EXEN CORPORATION
TOKYO, JAPAN

<http://www.exen.co.jp/>

ISO9001 Certified



Used for all types of concrete construction:
Civil engineering works, general construction
and precast concrete secondary products.



Features

1. Compact, light weight and powerful.
2. Comfortable operation design and less vibration transmission to operator's hand.
3. Simple design, excellent durability and easy maintenance.

High Frequency Internal Vibrator



HBM50VF 48v

Hard Shaft Design (For use in heavy re-bar applications)



HBM30ZXLH 48v

■ SPECIFICATIONS

Model	Output (W)	Voltage (V)	Current (A)	Frequency (Hz)	Overall length (mm)	Head length (mm)	Hose length (mm)	Weight (kg)
HBM30ZX	130	48	3.5	200/240	6,567	31×376	28×6,000	9.6
HBM40VF	250		5.5		6,502	43×348	33×6,000	11.8
HBM50VF	400		9.0		6,551	52×397	36×6,000	15.6
HBM60ZX	500		13.0		6,577	61×415	36×6,000	17.5
HBM30ZXLH	130		3.5		5,954	31×376	28×4,000	12.1
HBM40VFLH	250		5.5		5,829	43×360	28×4,000	13.9

High Frequency Power supply (Inverter)

Features

1. Die cast aluminum design housing for maximum corrosion resistance.
2. Water resistant design.
3. Designed for wash down clean up (Low pressure)
4. Internal ground fault protection for safety
5. Constant output voltage design for maximum vibration performance.





Water resists frequency inverter




HC230A 



HC113B 

HC116B 




HC111B 

HC111BRC 

*Available in 200 -240V single phase. Please ask for the details.

Frequency Inverter (Large capacity type)



H260A 

■ SPECIFICATIONS

Model	Input				Output				Nos. of socket outlet	Weight (kg)
	Input (KVA)	Voltage (V)	Current (A)	Frequency (Hz)	Output (KVA)	Voltage (V)	Current (A)	Frequency (Hz)		
HC111B / HC111BRC	1.3	100	13.0	50/60	1.03	48	12.4	240	1	9.8
HC113B	1.5		15.0		1.30		15.0		2	10.0
HC116B	2.0		20.0		1.60		19.0		3	10.1
HC230A	3.8	200	11.0		3.00		36.0	100-240	3	15.5
H260A	6.4	200	18.5		6.00		72.0	100-240	4	46.0



These notations mean Japan's standard voltage. With regard to other voltage specifications, please ask us.

Totally enclosed fan cool design (TEFC) to prevent invasion of the foreign substance to generator unit.



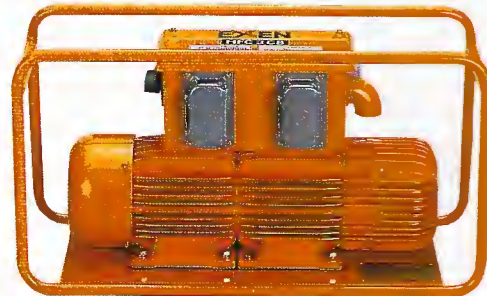
HAG112MFR



HAG122MF



HAG136MF



HFC2,4CB

HFC4CB

■ SPECIFICATIONS

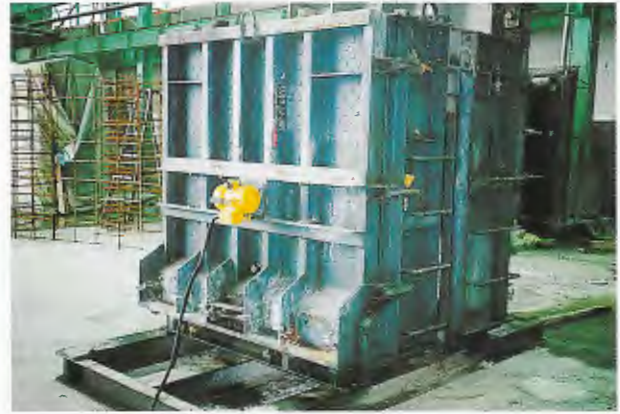
Model	Output (W)	Voltage (V)	Current (A)	Frequency (Hz)	Engine		Nos. of socket outlet	Weight (kg)
					Model	Output (kW)		
HAG112MFR	1.2	48	14.4	240	Robin EH092D	2.1/1.5	2	22.6
HAG122MF	2.2		26.5		Robin EX13D	3.2/2.2		33.0
HAG136MF	3.6		43.3		Robin EH25-2DM2	5.9/4.7		46.0

Model	Input				Output				Nos. of socket outlet	Weight (kg)
	Input (KVA)	Voltage (V)	Current (A)	Frequency (Hz)	Output (KVA)	Voltage (V)	Current (A)	Frequency (Hz)		
HFC2.4CB	4.2	200	16.0	50/60	2.4	48	28.0	200/240	3	50
HFC4CB	7.6		22.0		4.0		48.0		4	66

High Frequency External Vibrator

Features

1. Quick mount design using hook base bracket and simple hinge bolt.
2. High frequency vibration for excellent surface finishing.
3. Totally sealed design for steam curing environment.



HKM75LF 48v
HKM75LFS
HKM55LF
HKM55LFS



HKM30LF 48v
HKM30LFS



HKM75BL 48v



Hook Base Bracket

High Frequency External Vibrator

■ SPECIFICATIONS

Model	Output (W)	Voltage (V)	Current (A)	Switch	Frequency (Hz)	Centrifugal force (kN)	Weight (kg)
HKM30LF	300	48	8.0	No	50-120	2.75	10.0
HKM30LFS				Yes			11.0
HKM55LF	550		12.5	No		8.83	16.5
HKM55LFS				Yes			17.5
HKM75LF	750		17.0	No		11.80	21.3
HKM75LFS				Yes			22.3
HKM75BL		No		25.0			

■ Number of vibrator units that can be operated

Model	HBM Internal				HKM External				
	30ZX	40VF	50VF	60ZX	154VS	304VS	30LF/LFS	55LF/LFS	75LF/LFS
HC111B/(RC)	3	1	1	—	2	1	1	—	—
HC113B	4	2	1	—	3	1	1	—	—
HC116B	5	3	2	1	5	2	2	1	1
HC230A	10	6(5)	4(3)	2	10(8)	4(3)	4(3)	2	2
H260A	20	13(12)	8(6)	5(4)	20(18)	9(7)	9(7)	5	4
HFC2.4CB	8	5(4)	3(2)	2(1)	7	3(2)	3(2)	2	1
HFC4CB	13	8	5(4)	3(2)	13(12)	6(5)	6(5)	3	2
HAG112MFR	3	2	1	—	2	1	1	—	—
HAG122MF	6	4	2	1	6	2	2	1	1
HAG136MF	11	7(6)	4(3)	3(2)	11(9)	5(4)	5(4)	3(2)	2

* The number in () is the number of vibrators available for simultaneous continuous operation.

Aluminum Die Cast
Double Insulated

Features

1. Durable aluminum die cast motor case.
2. Teflon coated motor parts prevent adhesion of concrete for easy cleaning.
3. Double Insulated motor design for safety.
4. Anti-vibration handle design.

E23F0.4m

E23F0.8m

E23F1.3m

E23F1.8m



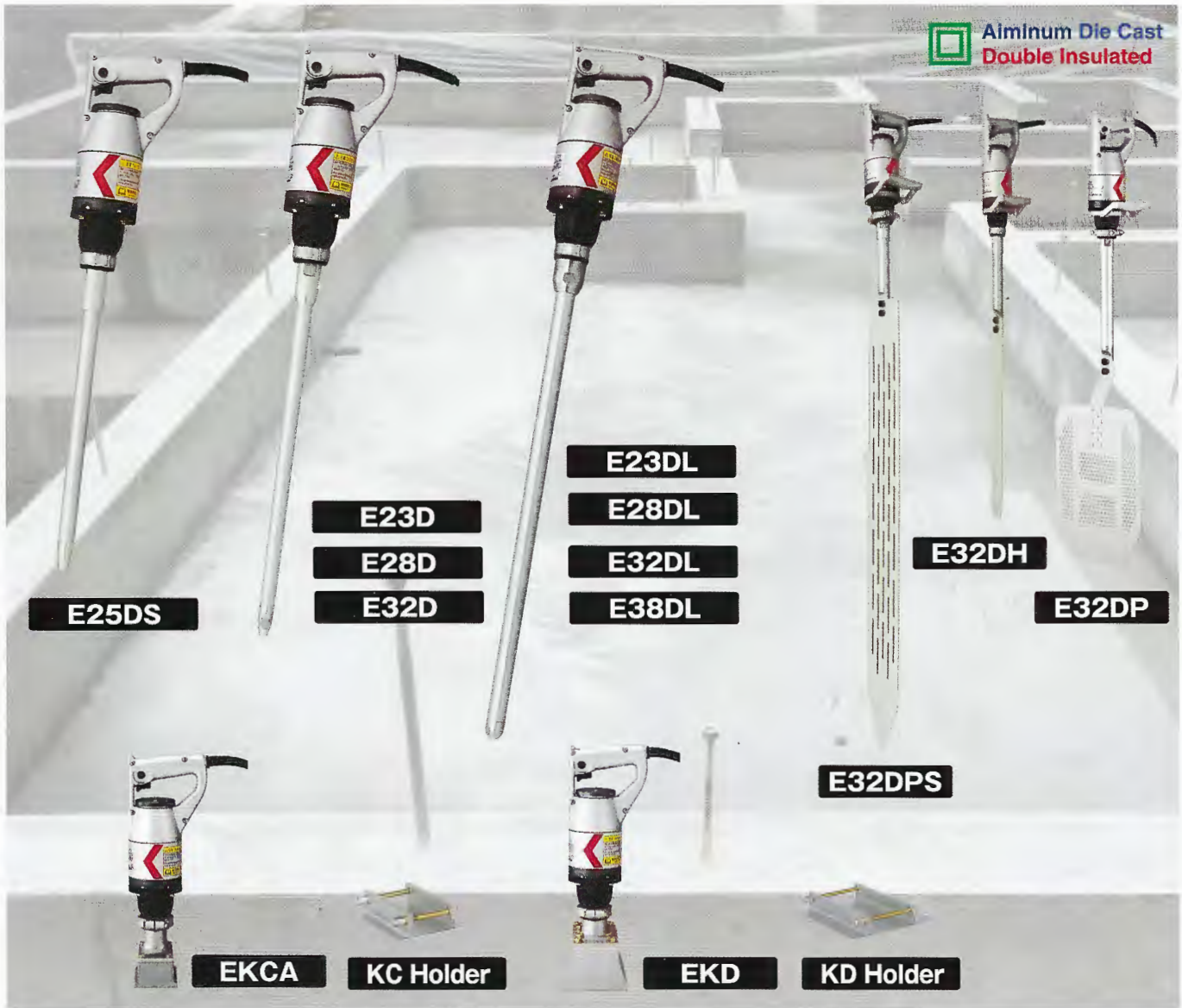
Handy Vibrator (Flexible Type)

SPECIFICATIONS

Model	Shaft Length (m)	Output (W)	Input		Frequency (Hz)	Amplitude (mm)	Total Length (mm)	Head Dia.×Length (mm)	Length Hose/ Shaft Assembly (mm)	Weight (kg)
			(V)	(A)						
E23F	0.4	280	100	5	220~280	0.8	1,074	23×336	820	5.0
	0.8						1,489		1,235	5.5
	1.3						1,989		1,735	6.3
	1.8						2,489		2,235	7.1
E28FP	0.6	280	100	5	220~280	1.5	1,078	28×186	824	5.0
	1.0						1,482		1,228	5.6
	1.5						1,982		1,728	6.4
	2.0						2,482		2,228	7.2
E32FP	0.6	280	100	5	210~270	1.6	1,079	32×187	825	5.2
	1.0						1,483		1,229	5.9
	1.5						1,983		1,729	6.7
	2.0						2,483		2,229	7.4
E38FP	0.6	280	100	5	210~270	1.3	1,079	38×187	825	5.6
	1.0						1,483		1,229	6.2
	1.5						1,983		1,729	7.0
	2.0						2,483		2,229	7.8

* Input 220—240V is available

Handy Vibrator (Hard Shaft, Surface Finish and External)



Handy Vibrator (Hard Shaft, Surface Finish and External)

■ SPECIFICATIONS

Model	Output (W)	Input		Frequency (Hz)	Amplitude (mm)	Total Length (mm)	Head Dia. X Length (mm)	Weight (kg)
		(V)	(A)					
E25DS	280	100	5	235—285	1.2	756	25×447	4.9
E23D					0.6	865	23×556	4.9
E28D				220—270	1.8	784	28×475	5.0
E32D				200—250	1.8	807	32×498	5.6
E23DL				235—285	0.6	1,009	23×700	5.2
E28DL				220—270	1.8	1,015	28×706	5.8
E32DL				200—250	1.8	1,036	32×727	6.3
E38DL				200—250	1.5	1,042	38×733	7.4
EKCA				160—200	0.6	404	75×102	4.7
W/Holder				407		120×150	5.8	
EKD	140—180	0.6	424	110×150	5.9			
W/Holder	427		200×200	7.6				

Model	Output (W)	Input		Frequency (Hz)	Total Length (mm)	Head Dia. X Length (mm)	Weight (kg)
		(V)	(A)				
E32DP	280	100	5	225—275	1,138	300×400	7.5
E32DPS				205—280	1,734	120×1,219	7.8
E32DH				225—275	1,080	50×550	5.6

* Input 220—240V is available

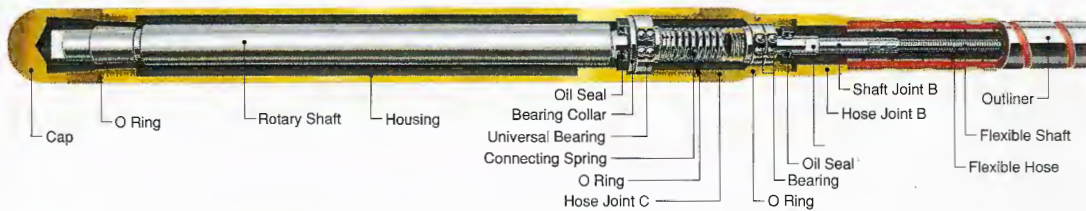
The unique HV pendulum design allows for maximum torque to maintain speed under load vs. conventional type flex shaft design.

Features

1. Output speed of approximate 3,000 rpm reduces wear of the flexible shaft and other rotating components providing maximum product life.
2. Unique "Coupling" spring design eliminates damage to the flexible shaft from failure.
3. Quick Disconnect vibrator design.



EXEN HV45ZB Vibrator Cutaway View



SPECIFICATIONS

Model	Hose length (m)	Frequency (Hz)	Overall Length (mm)	Head (Dia. x L) (mm)	Weight (kg)
HV28ZB	4	158-200	4,559	28x420	10.1
	6		6,559		14.1
HV32ZB	4		4,562	32x423	10.1
	6		6,562		14.1
HV38ZB	4		4,585	38x440	11.2
	6		6,585		15.2
HV45ZB	4	4,596	45x451	12.3	
	6	6,596		16.1	
HV60ZB	6	150-200	6,593	60x448	19.1
	7		7,593		22.0



Pendulum Vibrator

Drive Engine



HVE-RF



HVE-FS

SPECIFICATIONS

Model	Engine type		Output/Revolution (kW/min ⁻¹)	Weight (kg)
HVE-RF	Robin EY20-3D	4 cycle air-cooled Gasoline engine	2.5/3,400	25
HVE-FS				22

SPECIFICATIONS

Model	Output (W)	Voltage (V)	Current (A)	Frequency (Hz)	Revolution (min ⁻¹)	Weight (kg)
HVNF	1,000	200	4	50/60	2,850/3,450	20.4

* Any Voltage available

Drive motor

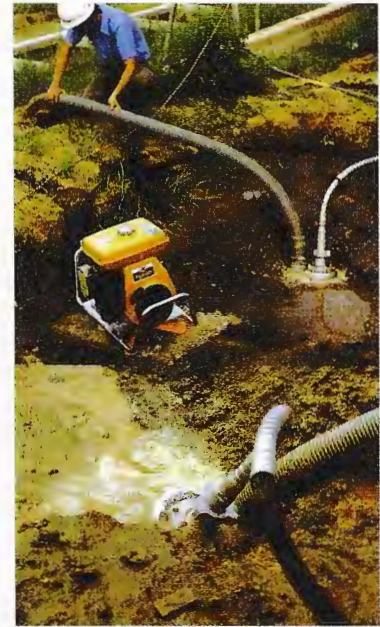


HVNF

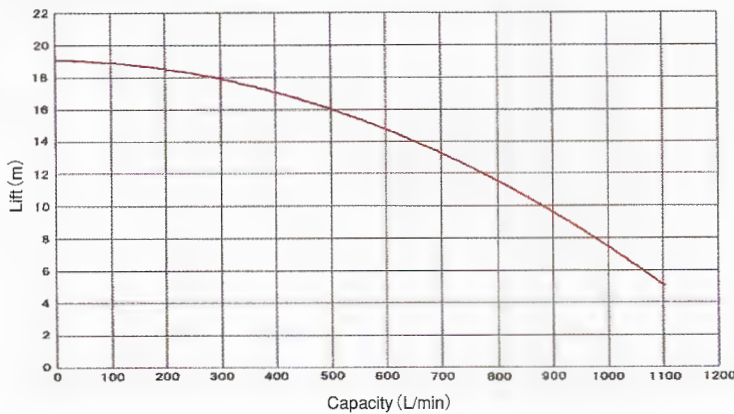
Submersible Pump

Features

1. Aluminum alloy casting design.
2. Equipped with specially designed "Mechanical oil seal" for maximum durability.
3. Durable cast iron impeller design for long life.
4. In order to prevent adverse current of muddy water into the hose, attach bearings in 2 places of inside of hose coupling and attach another oil seal.
5. The above measure increases durability of hose and shaft.
6. Equipped protection outliners in 3 places as standard.



Performance curve



EFP80 Pump set



EFP80 Pump

■ SPECIFICATIONS

Hose length (m)	Discharge Diameter	Max. Lift (m)	Max. Capacity (L/min)	Revolution (rpm)	Weight (kg)		
					Pump	Hose/Shaft	Total
6	76(3in)	19.1	1,103	3,400	6.9	19.3	26.2