



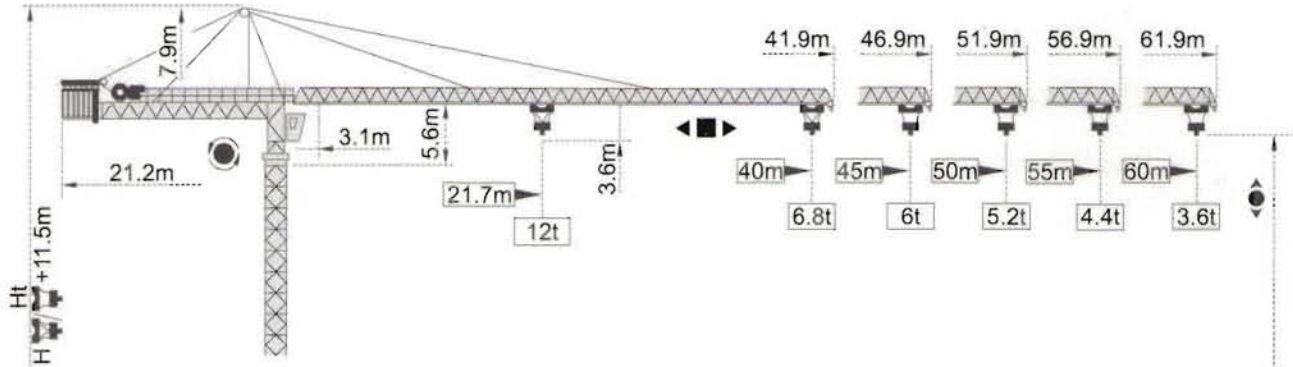
**SCM**

**H3/36B**

四川建設機械(集團)股份有限公司  
SICHUAN CONSTRUCTION MACHINERY (GROUP) CO.,LTD

### 外形尺寸

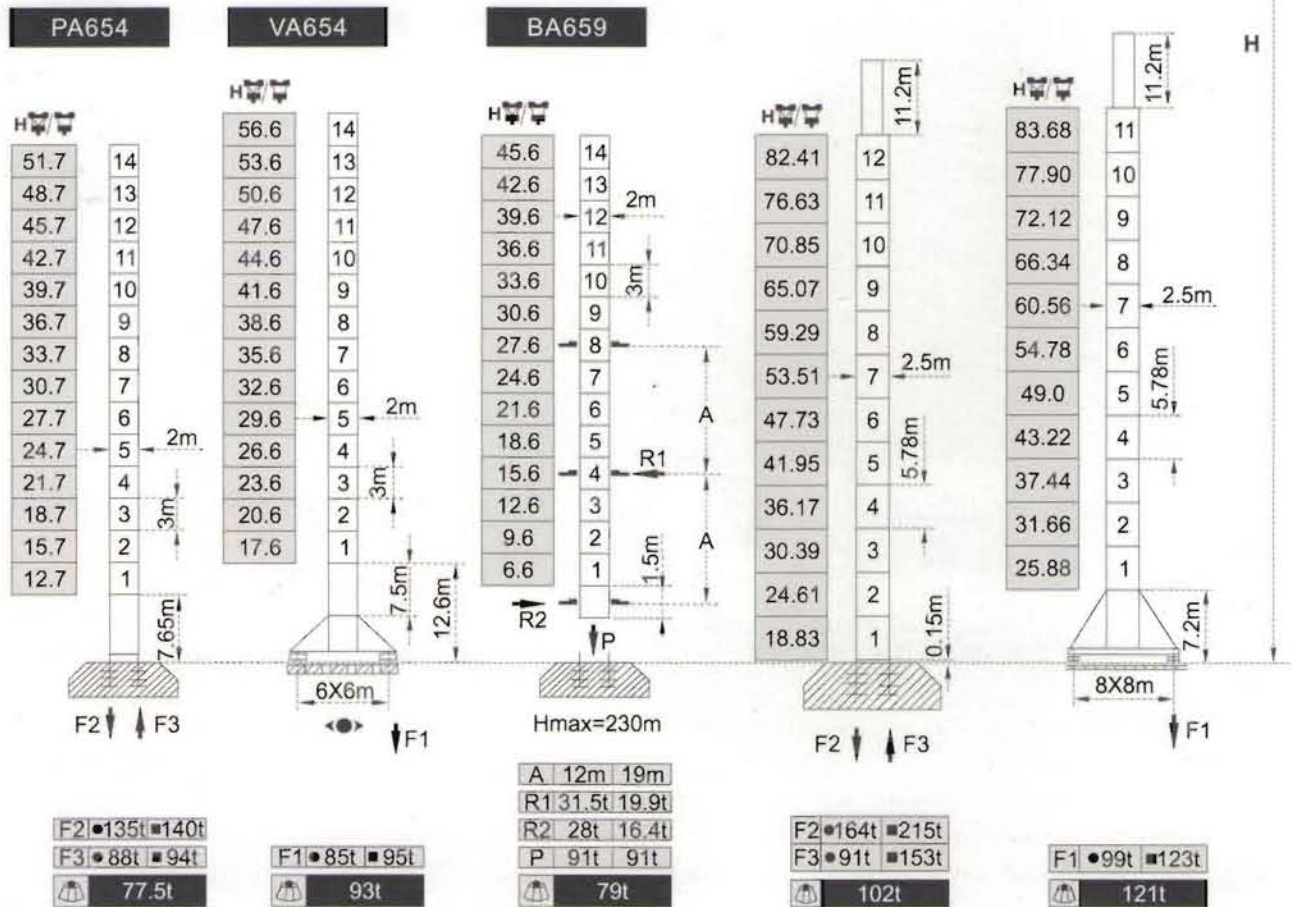
Outline Dimensions



### 塔身截面

Mast  $\varnothing 2m \times 2m$

$\varnothing 2.5m \times 2.5m$



● 工作狀態 in service    ■ 非工作狀態 out of service  
 自重 Without load and ballast with longest jib and maximum height

F=固定反力或輪壓 Reactions

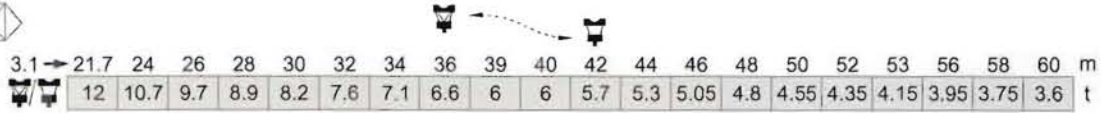


## 載荷特性

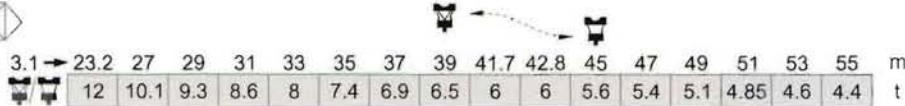
### Load Diagrams

#### 臂Jib

60m



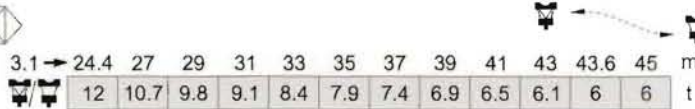
55m



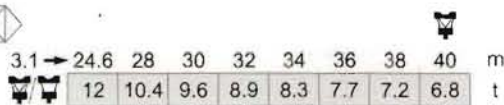
50m



45m



40m



標準小車可使用2/4倍率繩。(使用四倍率繩時,應從二倍率的載荷中減去0.2噸)。  
 Standard trolley 2/4 fall ( when using subtract 0.2t from the loads )

注：最大起重量可達20t

## 產品介紹

### Products Introduction

SCM-H3/36B塔式起重機, 是本公司引進法國Potain公司先進技術, 遵照中法雙方《84MGS-161015CF》合同, 嚴格按照Potain公司的產品設計、制造工藝、檢驗技術等生產的新型塔機。該機符合NFE52081和DIN5018標準。

SCM-H3/36B塔式起重機, 1989年經法國Potain公司技術鑒定并給予承認。1990年獲得中華人民共和國國家優質產品銀質獎。

該機具有軌道行走式、固定附着式、內爬式三種使用類型。附着式最大起升高度205米。超過此高度的非標塔機可向公司諮詢。

SCM H3/36B tower crane is manufactured under the introduced technology from POTAIN in conformity with contract "84MGS-161015CF" signed by CHINA and POTAIN(FRANCE). The crane is up to the standards of NFE 52081 (FRANCE) and DIN 5018 (GERMANY).

The designing, producing and testing technology are all inspected and accepted by POTAIN in 1989. In 1990 the crane was awarded "The National Best Quality Product".

SCM H3/36B can be rail-travelling type, stationary type (or anchorage type) and inner-climbing type. The maximum hoisting height of the anchoring type can reach 205m. When exceeds this height, please consult us.

機構特性		Specifications Mechanisms				
名稱 Name	機構代號 Model	工作速度 m/min Operating speeds		起重量 t Hoist weight	纜繩量 Rope length	電動機 kW Motor
起升 Hoisting	70RCS30 ▲ ▼	雙繩 2 fall	0-40	6	530m >530m ★	51.5
		四繩 4 fall	0-80	3		
		雙繩 2 fall	0-20	12		
		四繩 4 fall	0-40	6		
	75LVF30R ▲ ▼	雙繩 2 fall	0-40	6	600m >600m ★	55
		四繩 4 fall	0-80	3		
		雙繩 2 fall	0-20	12		
		四繩 4 fall	0-40	6		
	120LVF30 ▲ ▼	雙繩 2 fall	0-65	6	620m >620m ★	90
		四繩 4 fall	0-130	3		
		雙繩 2 fall	0-260	1.5		
		四繩 4 fall	0-32.5	12		
變幅 Trolleying	X120 ◀▶		10-20-40			堵轉力矩 120N.m
	6DCV ◀▶		0-58			5
	6DVF ◀▶		0-58			5
回轉 Slewing	OMD85 ●		0-0.7 r/min			2×9
	RCV185B ●		0-0.7 r/min			堵轉力矩 2×185N.m
	24RVF ●		0-0.7 r/min			堵轉力矩 2×185N.m
行走 Travelling	RT443 ◀▶		0-12.5-25			4×1.7/3.4
	18TVF ◀▶		0-25			4×3.4

★ 根據用戶特殊要求提供  
To be supplied according to client's specific requirements

Sole Agent :



**PT. Kartika Macons**  
JAKARTA

Proyek Pertokoan "Jayakarta Citra Lestari"  
Jl. P. Jayakarta No. 72 - 74 Blok B 4 - 6, Jakarta 10730  
☎ (021) 6011136 (Hunting) Fax. (021) 6260107  
Email Address : ptkm@indo.net.id



四川建設機械（集團）股份有限公司  
SICHUAN CONSTRUCTION MACHINERY GROUP CO.,LTD